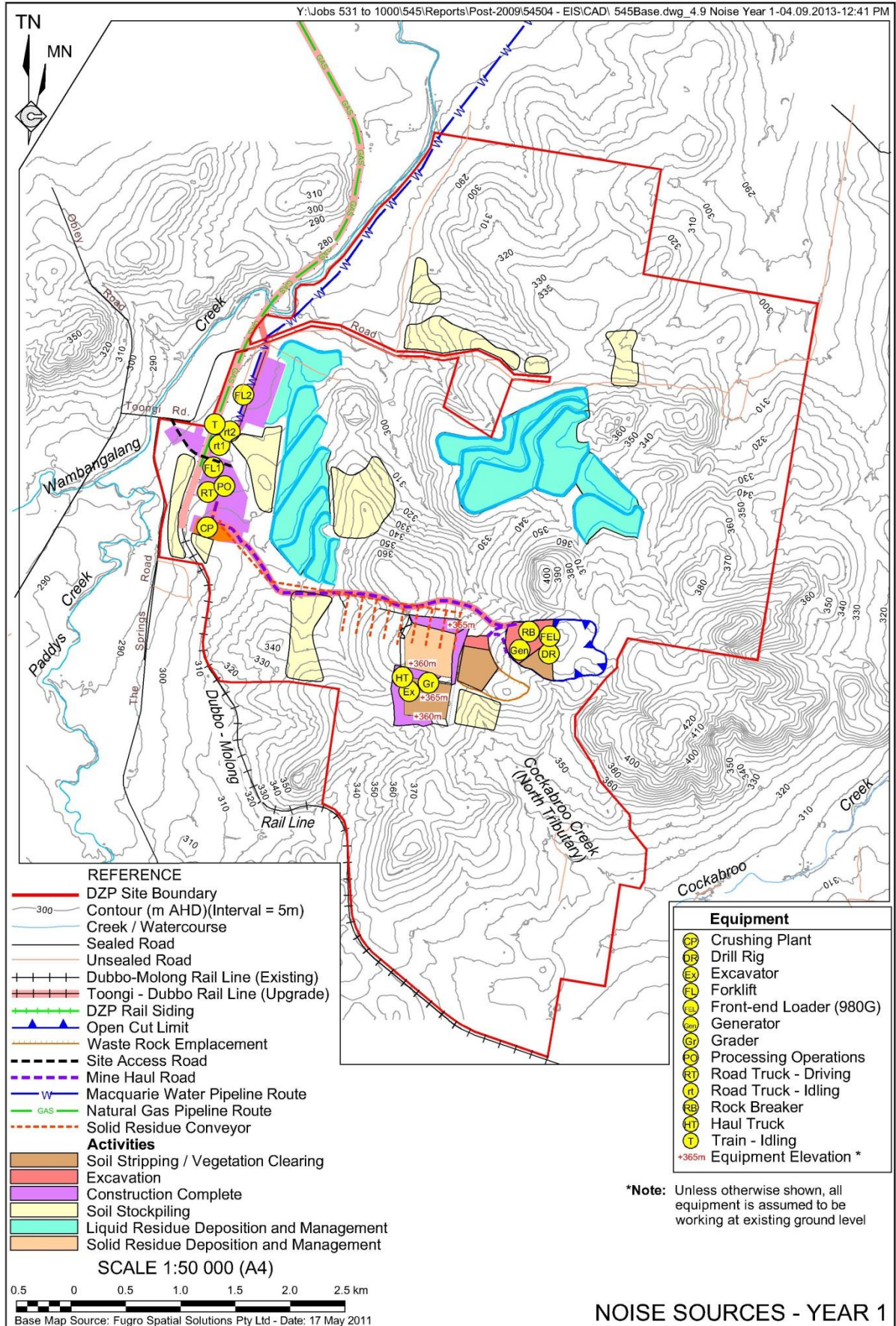
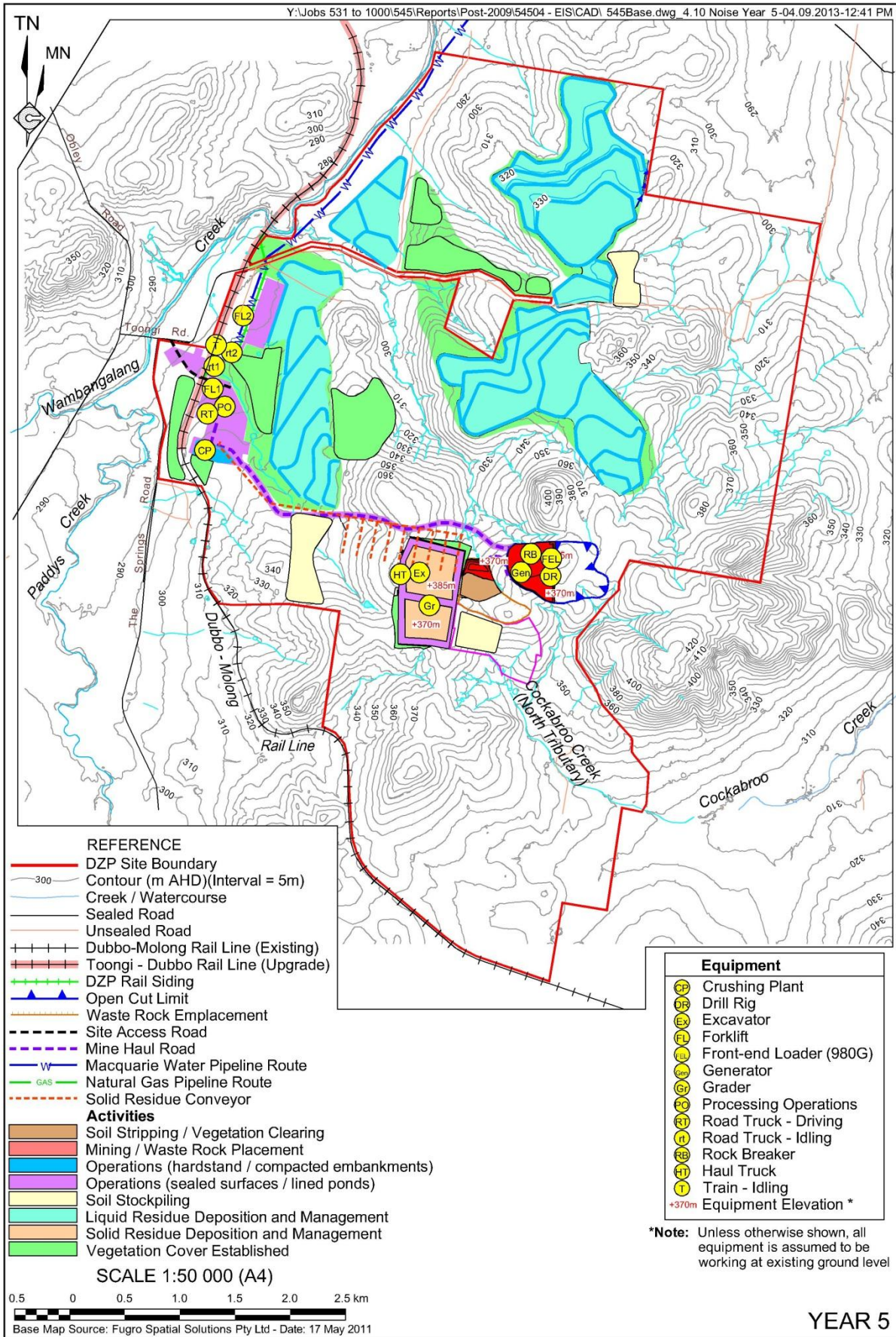


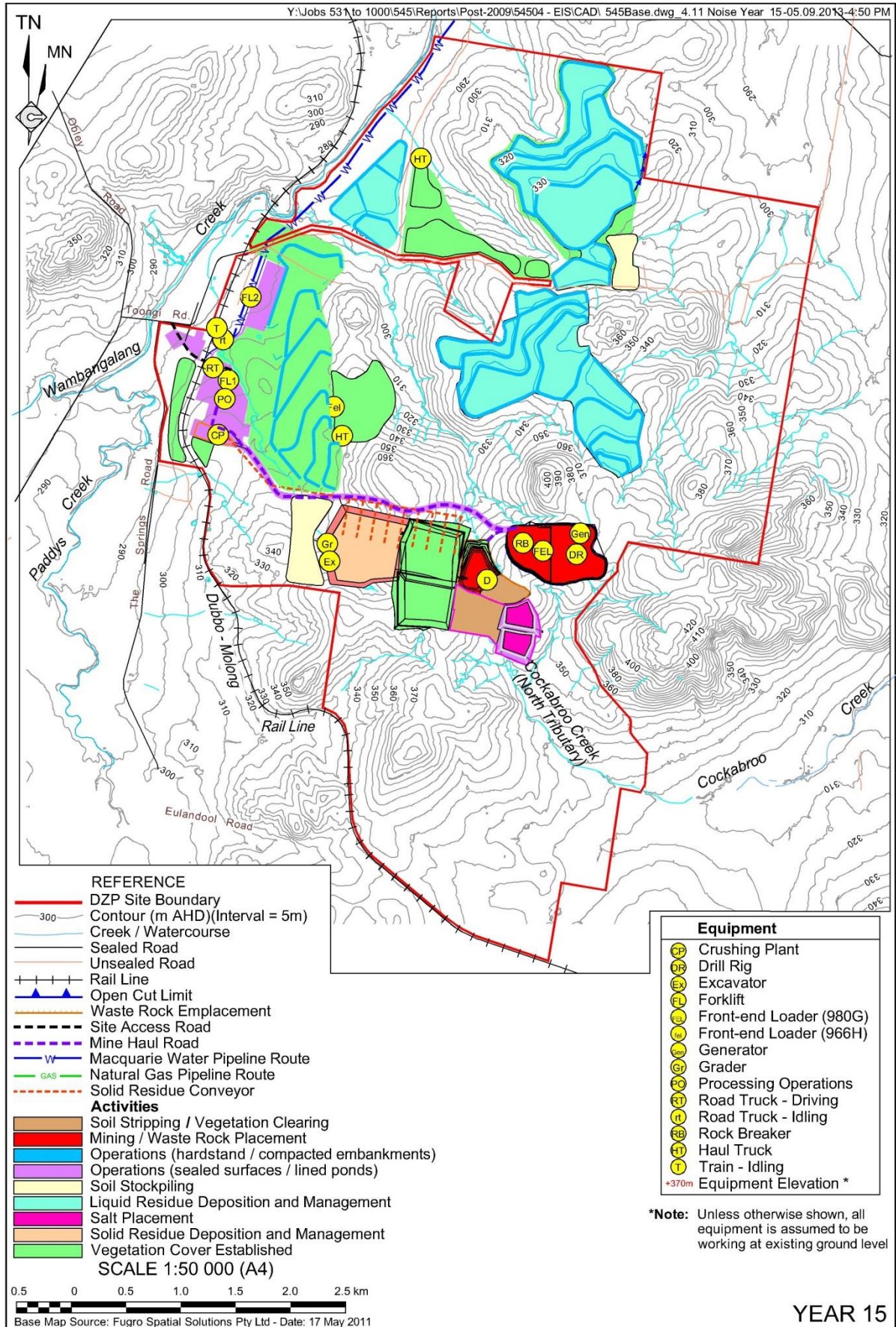
Appendix A Operational Scenarios - Plant locations and pit stages

Note: A colour version of this Appendix is available on the Project CD

This page has intentionally been left blank







This page has intentionally been left blank

Appendix B Meteorological analysis

This page has intentionally been left blank

Table B1 **Calculated prevailing winds**

Season	Period	Wind speed (m/s) (10th percentile)	Direction (degrees)	Percentage occurrence (%)
Summer	Night	2.4	22.5	31
Summer	Night	2.6	45	33
Summer	Night	2.6	67.5	35
Summer	Night	2.4	90	40
Summer	Night	1.9	112.5	51
Summer	Night	1.8	135	50
Summer	Night	2.1	157.5	41
Summer	Night	2.3	180	34
Summer	Night	2.3	202.5	31
Summer	Night	2.0	225	30
Autumn	Evening	2.0	112.5	37
Autumn	Evening	1.9	135	37
Autumn	Evening	2.2	157.5	37
Autumn	Evening	2.4	180	36
Autumn	Evening	2.5	202.5	34
Autumn	Evening	2.3	225	34
Autumn	Evening	1.8	247.5	33
Autumn	Evening	1.5	270	30
Autumn	Night	1.7	112.5	60
Autumn	Night	1.7	135	71
Autumn	Night	2.0	157.5	69
Autumn	Night	2.3	180	66
Autumn	Night	2.4	202.5	64
Autumn	Night	2.2	225	62
Autumn	Night	1.7	247.5	59
Autumn	Night	1.1	270	52
Winter	Day	1.8	270	31
Winter	Evening	1.5	112.5	38
Winter	Evening	1.7	135	45
Winter	Evening	2.0	157.5	48
Winter	Evening	2.4	180	47
Winter	Evening	2.6	202.5	47
Winter	Evening	2.6	202.5	47
Winter	Evening	2.5	225	47
Winter	Evening	2.2	247.5	47
Winter	Evening	1.9	270	44
Winter	Night	1.2	112.5	52
Winter	Night	1.6	135	66
Winter	Night	2.0	157.5	67
Winter	Night	2.3	180	68
Winter	Night	2.4	202.5	68
Winter	Night	2.2	225	67
Winter	Night	1.8	247.5	66
Winter	Night	1.3	270	58
Spring	Evening	1.9	112.5	36
Spring	Evening	2.0	135	35

Table B1 **Calculated prevailing winds**

Season	Period	Wind speed (m/s) (10th percentile)	Direction (degrees)	Percentage occurrence (%)
Spring	Evening	2.3	157.5	33
Spring	Evening	2.6	180	31
Spring	Evening	2.5	202.5	31
Spring	Evening	2.3	225	30
Spring	Night	1.8	112.5	58
Spring	Night	1.6	135	67
Spring	Night	2.0	157.5	64
Spring	Night	2.3	180	61
Spring	Night	2.4	202.5	59
Spring	Night	2.2	225	58
Spring	Night	1.7	247.5	55
Spring	Night	1.1	270	50

Appendix C Sound power levels

This page has been intentionally left blank

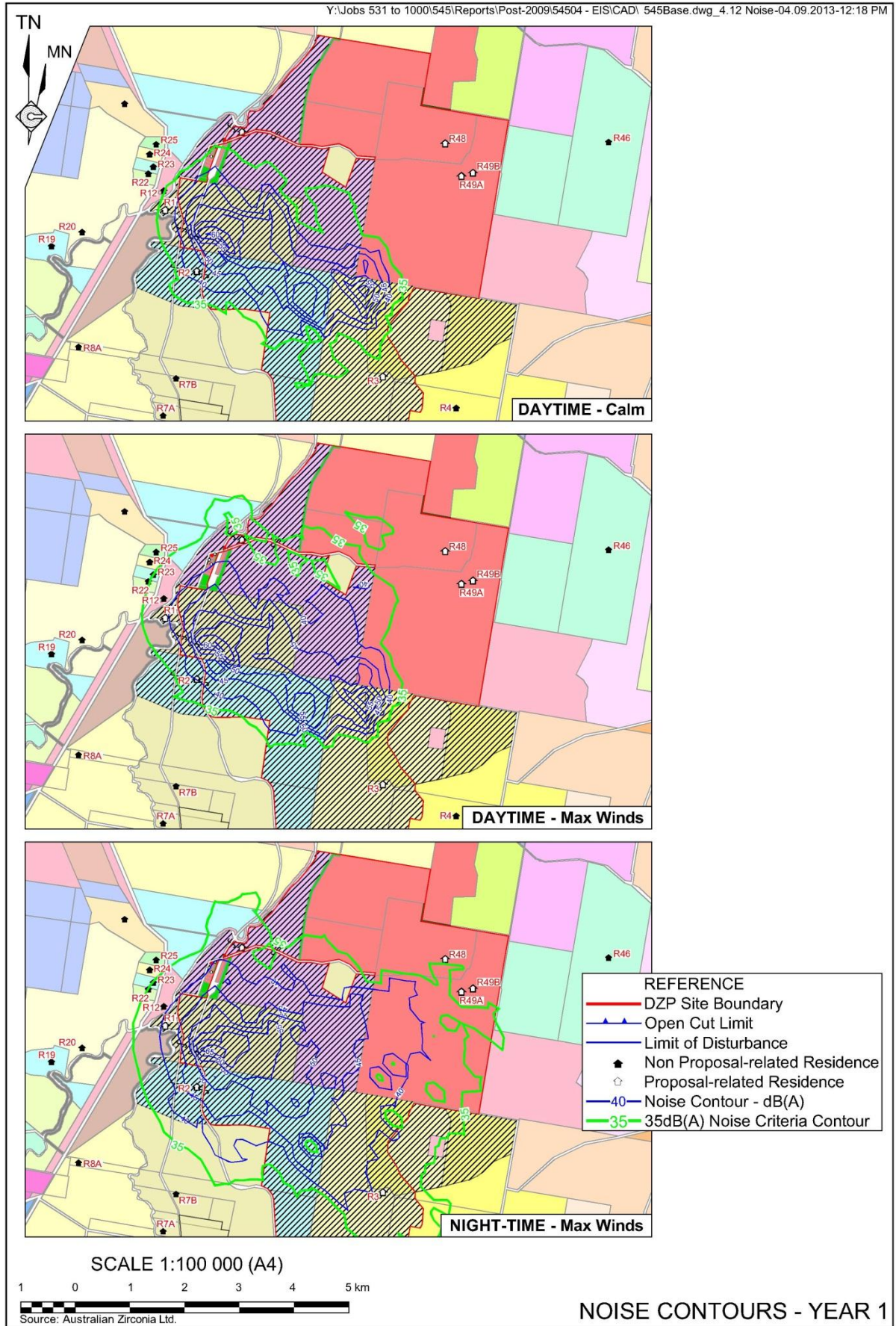
Table C1 Plant items $L_{eq(15-min)}$ dB(A) sound power level spectrum

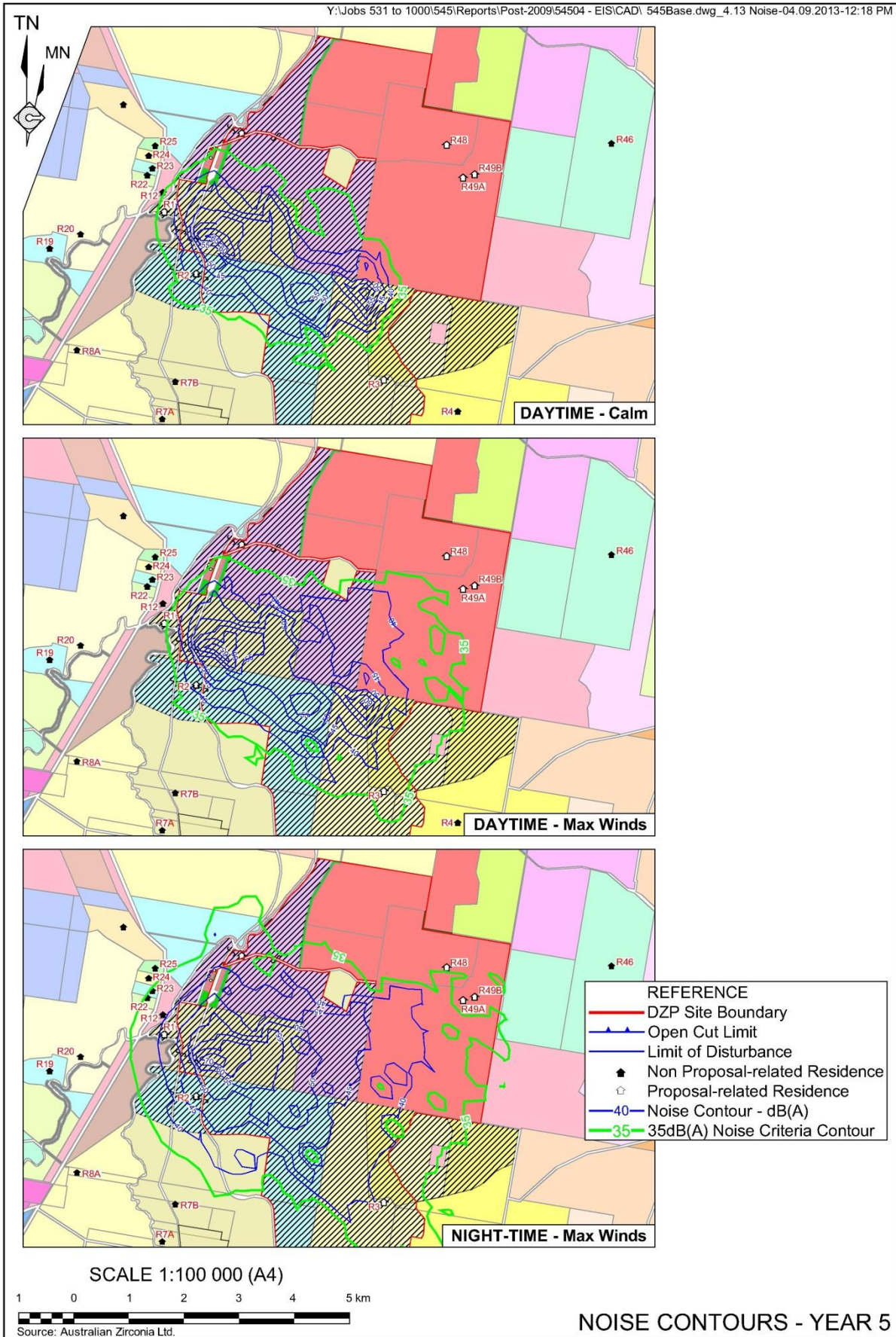
Noise Source	'A' Weighted frequency (Hz)									Total dB(A)
	31.5	63	125	250	500	1000	2000	4000	8000	
Dozer	108	113	108	106	106	103	100	94	85	116
Drill Rig	67	81	103	104	106	109	108	100	92	114
Excavator	63	81	92	98	101	101	101	95	85	107
Forklift	68	65	74	75	81	82	80	78	70	87
Front-end loader (pit)	99	104	107	110	108	107	107	101	91	116
Generator	57	73	81	90	87	94	90	87	81	98
Grader	68	75	89	97	97	99	97	90	80	104
Haul truck	73	94	99	97	101	103	102	95	87	108
Light vehicle	50	64	70	73	67	64	62	58	44	76
Lighting plant	57	73	81	90	87	94	90	87	81	98
Road truck	71	89	95	90	89	93	97	92	85	102
Road truck idling	43	61	67	77	82	85	86	81	74	90
Rock breaker	68	79	93	102	114	116	115	111	101	121
Water truck	71	89	89	91	96	100	95	90	81	103
Train idle	57	70	77	77	87	86	84	85	78	92
Crushing and ore handling (primary jaw)	78	100	107	114	119	120	117	111	101	124
Crushing and ore handling (cone crusher)	71	93	100	107	112	113	110	108	95	117
Limestone mill	74	86	96	101	111	112	112	108	95	117
Conveyor	40	51	55	57	64	61	57	52	42	68/m

This page has been intentionally left blank

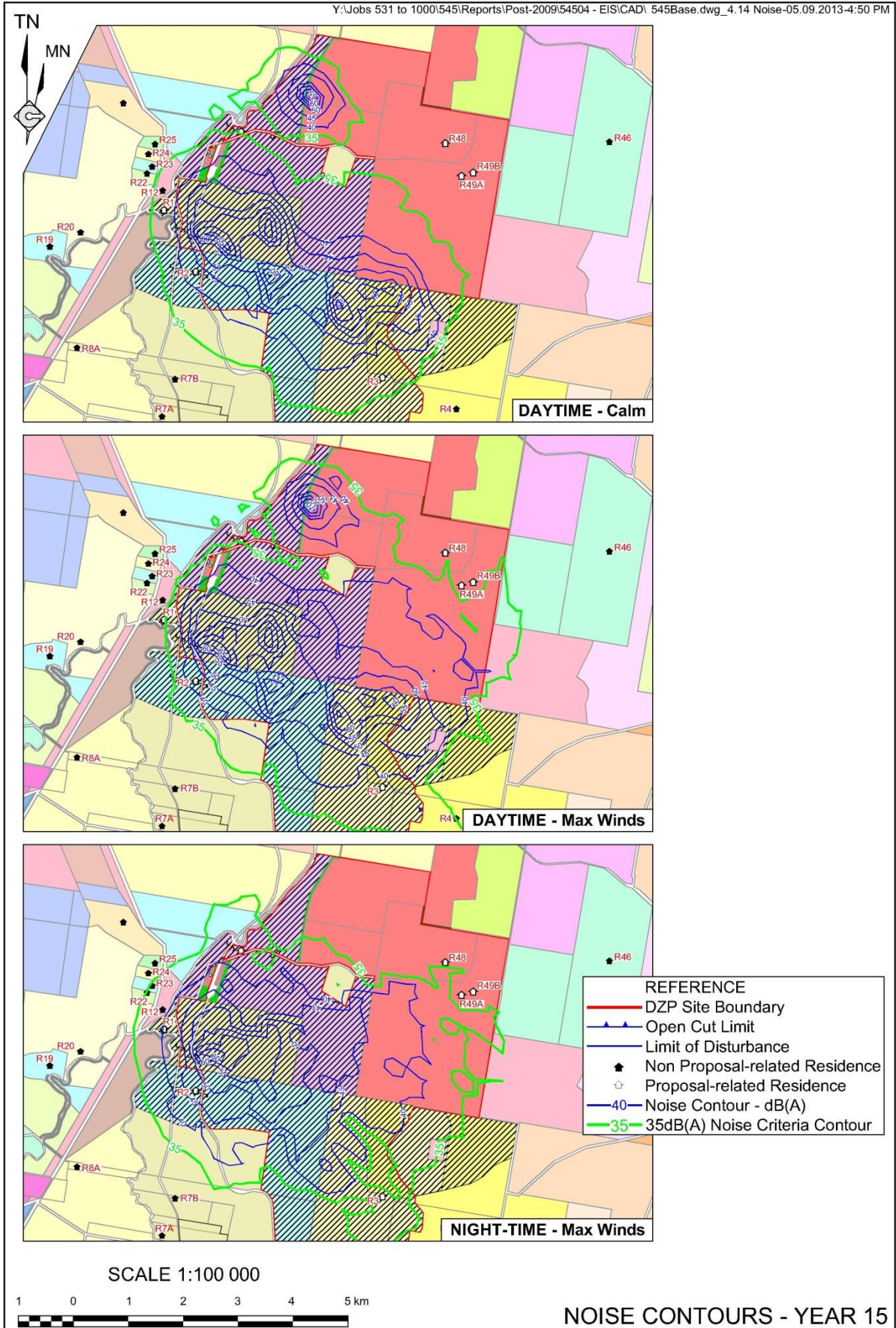
Appendix D Noise contours

This page has been intentionally left blank





Y:\Jobs 531 to 1000\545\Reports\Post-2009\54504 - EIS\CAD\ 545Base.dwg_4.14 Noise-05.09.2013-4:50 PM



This page has been intentionally left blank